

# JPK Pacific 11.80 Options

- Options
- Wind guage Trapezodial
  - LED light upgrade

- Options
- 2nd masthead halyard
  - 2nd fractional halyard
  - Topping lift

Sails (option)

- Mast
- HR - standard - 73kg
  - HR40 - 392gpa - 67kg
  - HS40 - 450gpa - 62kg
  - Colour and gloss (option)

- Rod Rigging (option)

- Spreaders
- Aluminium - standard -
  - Carbon - 6kg weight saving

- LED Light strip (option)
- none standard
  - LED light strip
  - LED Light with switch

- Boom
- Aluminium - standard
  - Carbon

Mast track (option)

Instruments (option)

- Gooseneck & Vang bracket
- Aluminium - standard
  - Carbon

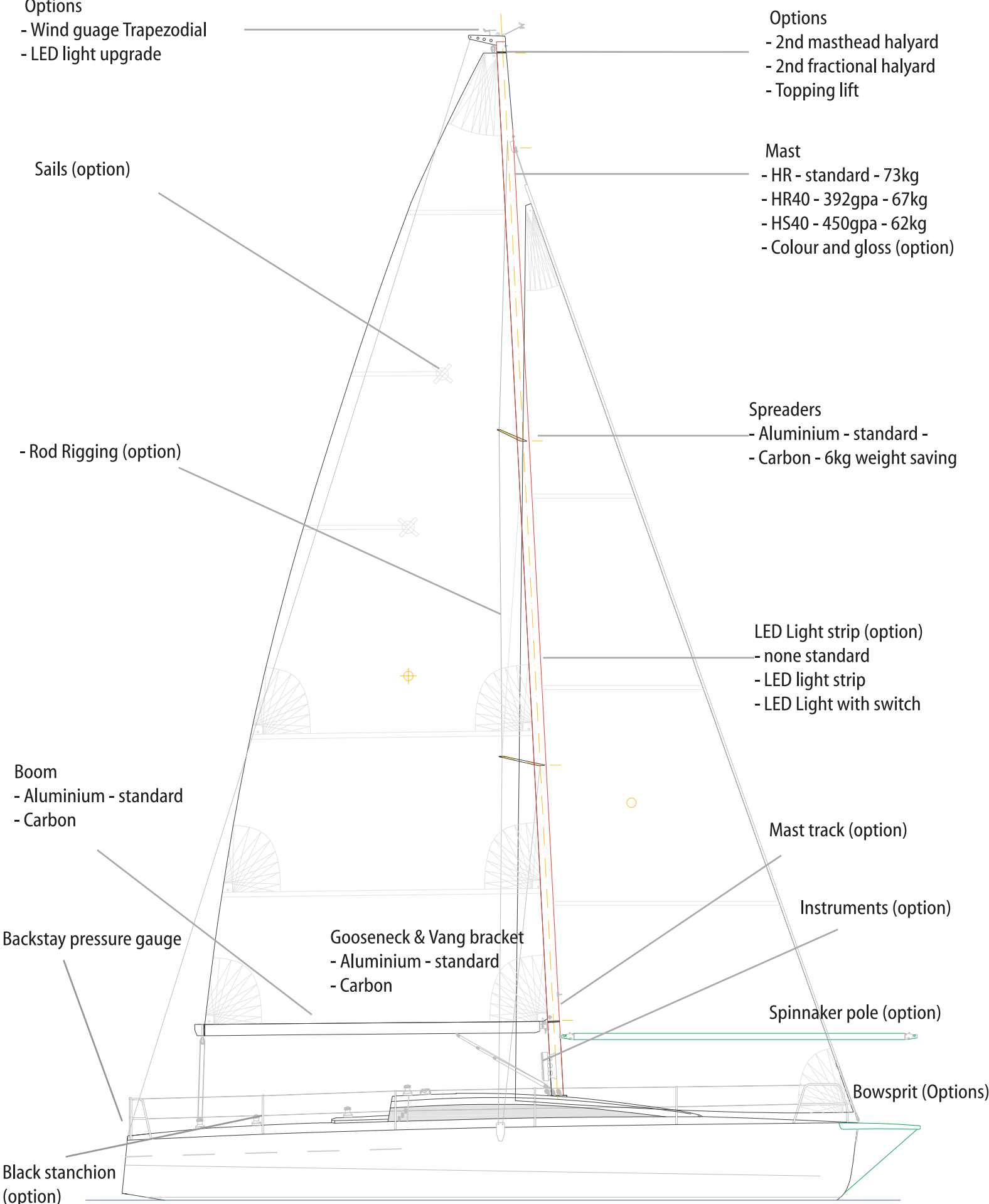
Spinnaker pole (option)

Bowsprit (Options)

Backstay pressure gauge

Black stanchion (option)

Hull - Prep, Sand, Antifoul, Colour and/or vinyl wrap (options)



# JPK Pacific 11.80 Interior



# JPK Pacific 11.80 Interior

All electronics are custom and quoted separately

Convert benches into bunks (not in picture)



Colour can be customised

Extra window

Extra shelf and cabinet(s)



Colour can be customised



# JPK Pacific 11.80 Deck

Standard winches Harken

Option to upgrade to:

- Performa
- Larger size

Recessed instrument panels (option)

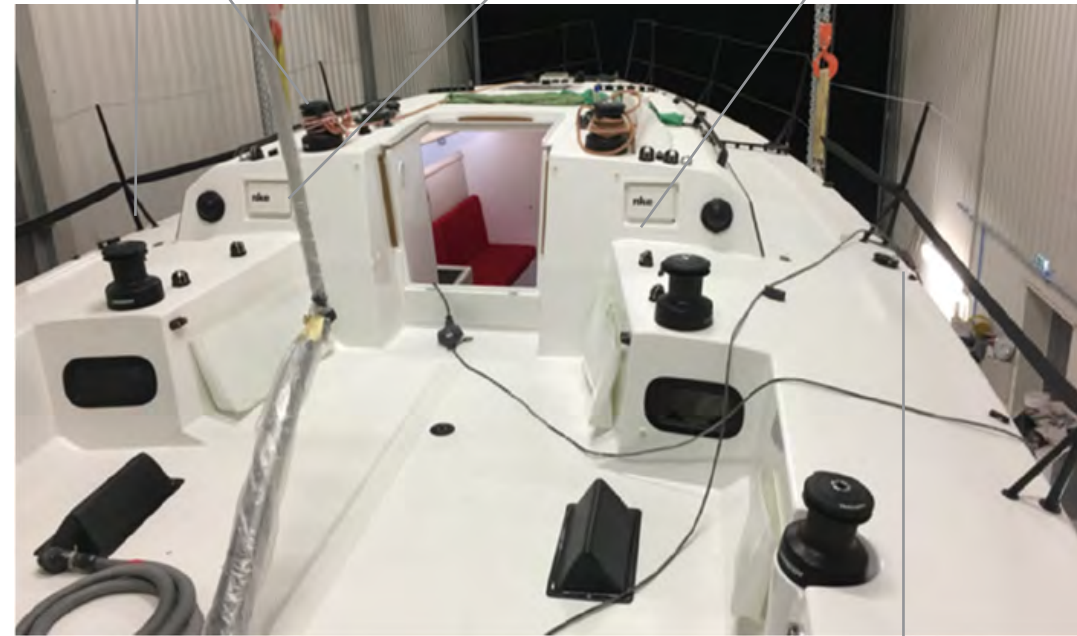
Mast LED switch option (not in picture)

Spinnaker block set up (option)

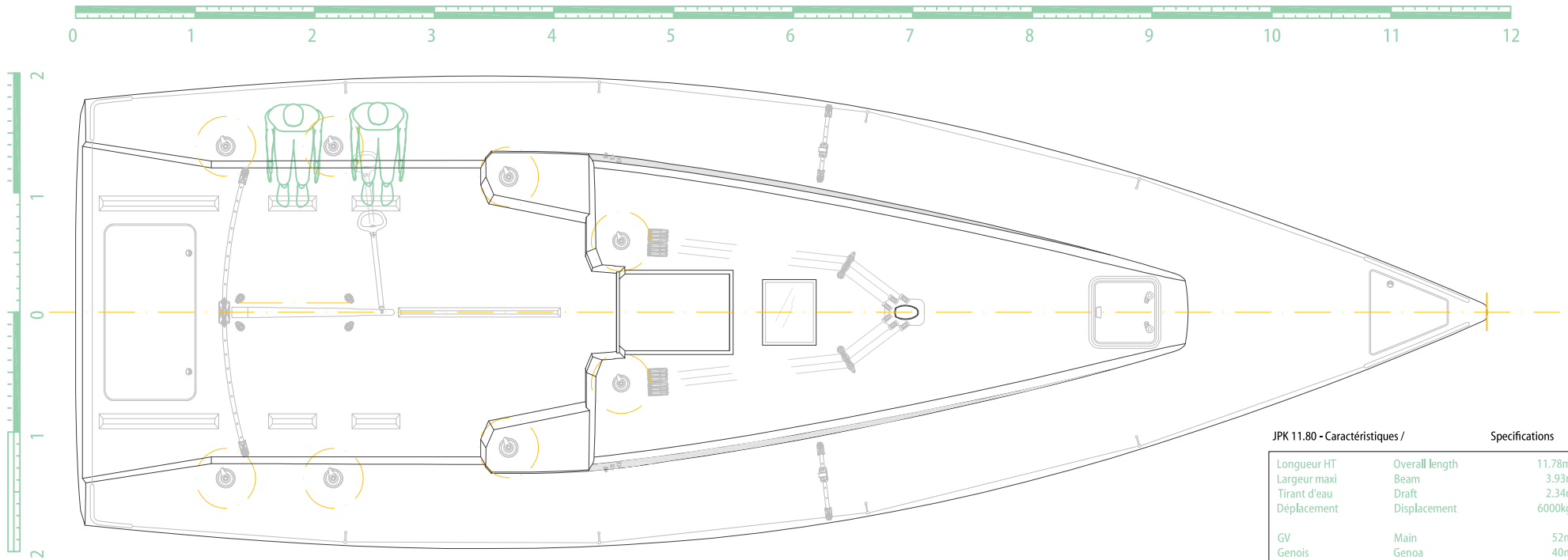
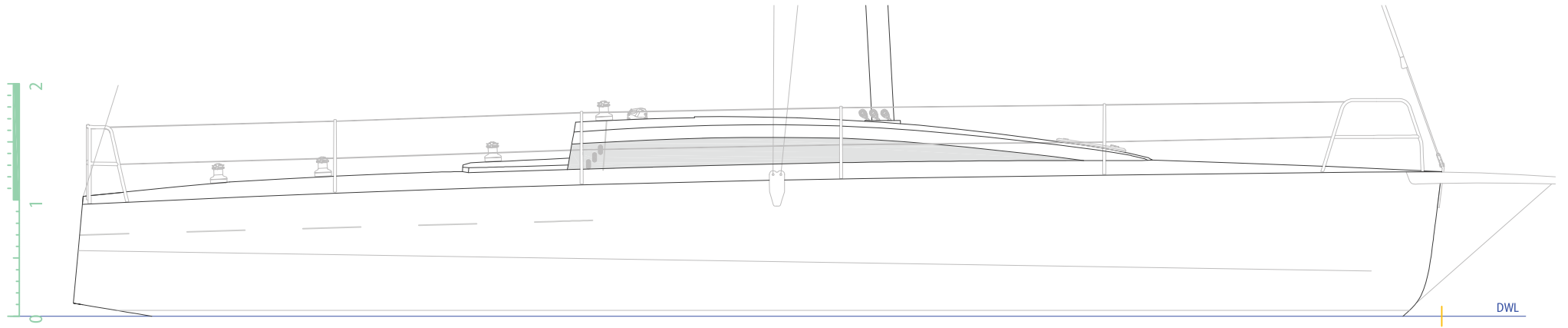


Telescopic stainless steel ladder (option)

Twin ruddern regulation system (option)



# JPK Pacific 11.80 General Arrangement



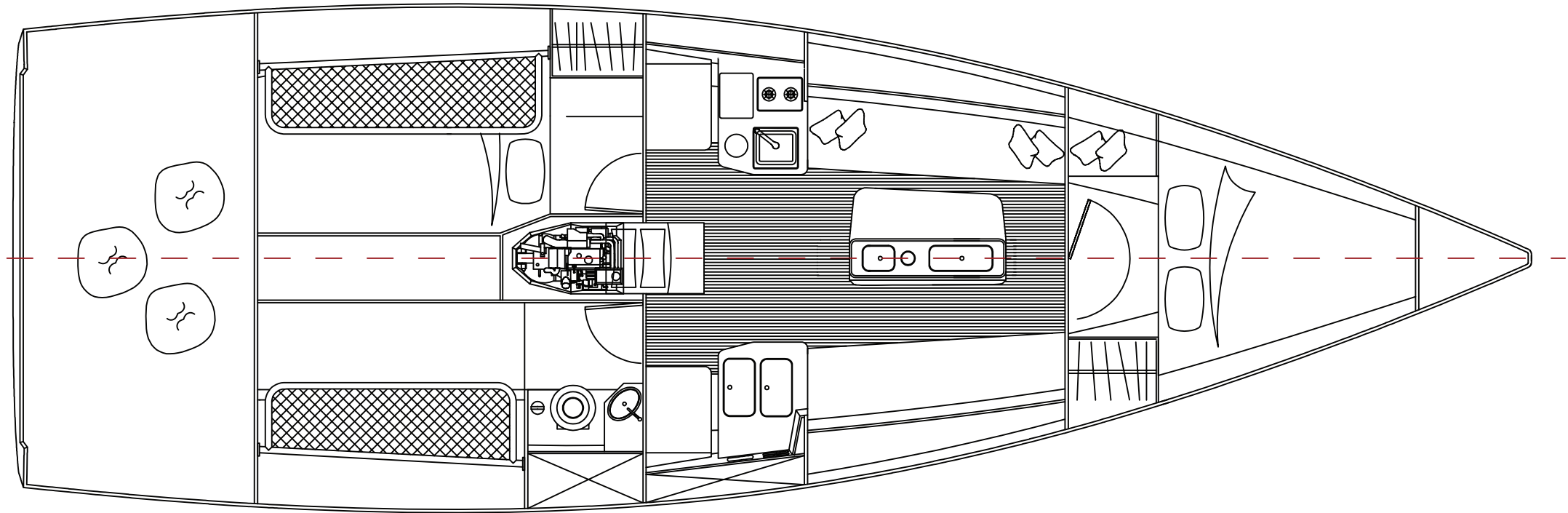
JPK 11.80 - Caractéristiques /		Specifications
Longueur HT	Overall length	11.78m
Largeur maxi	Beam	3.93m
Tirant d'eau	Draft	2.34m
Déplacement	Displacement	6000kg
GV	Main	52m <sup>2</sup>
Genois	Genoa	40m <sup>2</sup>

Builder :  
 Architecte/Yacht designer :  
 Ingénierie/Engineering :

JPK Pacific  
 Jacques VALER  
 YOS Ingénierie

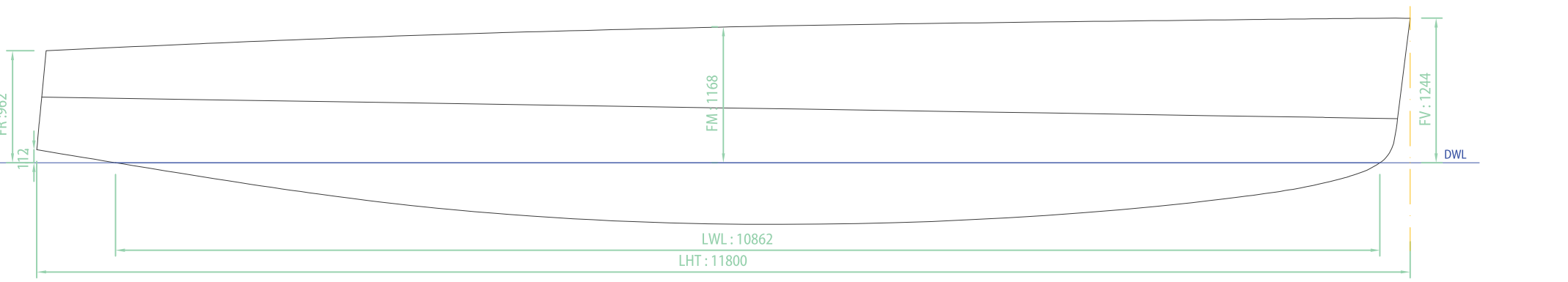
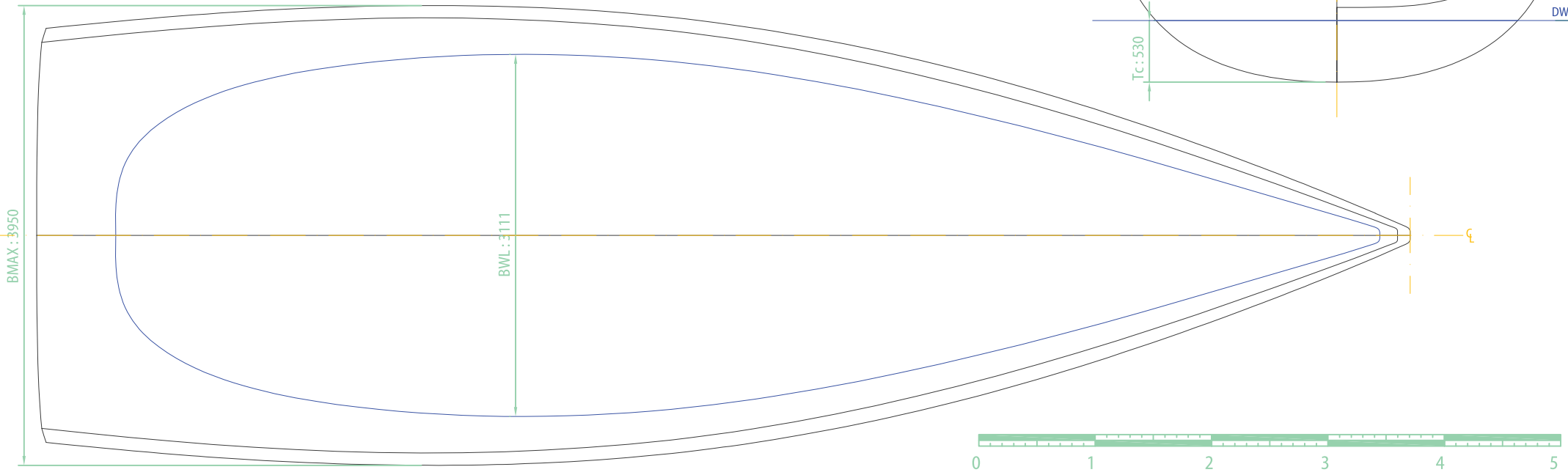
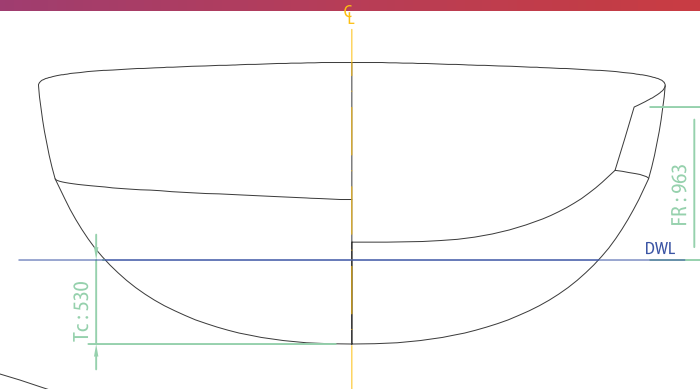


# JPK Pacific 11.80 Layout



# JPK Pacific 11.80 Hull

Longueur HT	11.80m
Largeur maxi	3.95m
Tirant d'eau de coque	0.53m
Déplacement de coque	7.25m <sup>3</sup>
Longueur à la flottaison	10.88m
Largeur à la flottaison	3.11m
Surface mouillée	26.56m <sup>2</sup>
Plan de flottaison	23.91m <sup>2</sup>
TPCM	245kg/cm
CB	0.404



# JPK Pacific 11.80 Sail Plan



Chantier/Shipyard :  
 Architecte/Yacht designer :  
 Ingénierie/Engineering :

JPK  
 Jacques VALER  
 YOS Ingénierie

## JPK 11.80 - Characteristics

## Specifications

Longueur HT	Overall length	11.78m
Largeur maxi	Beam	3.93m
Tirant d'eau	Draft	2.34m
Déplacement	Displacement	6000kg
GV	Main	52m <sup>2</sup>
Genois	Genoa	40m <sup>2</sup>

